

# MONTHLY MEMBERSHIP PROGRESS REPORT

LOCATION MISSOURI

District 26 M5

Results as of: 4/30/2023

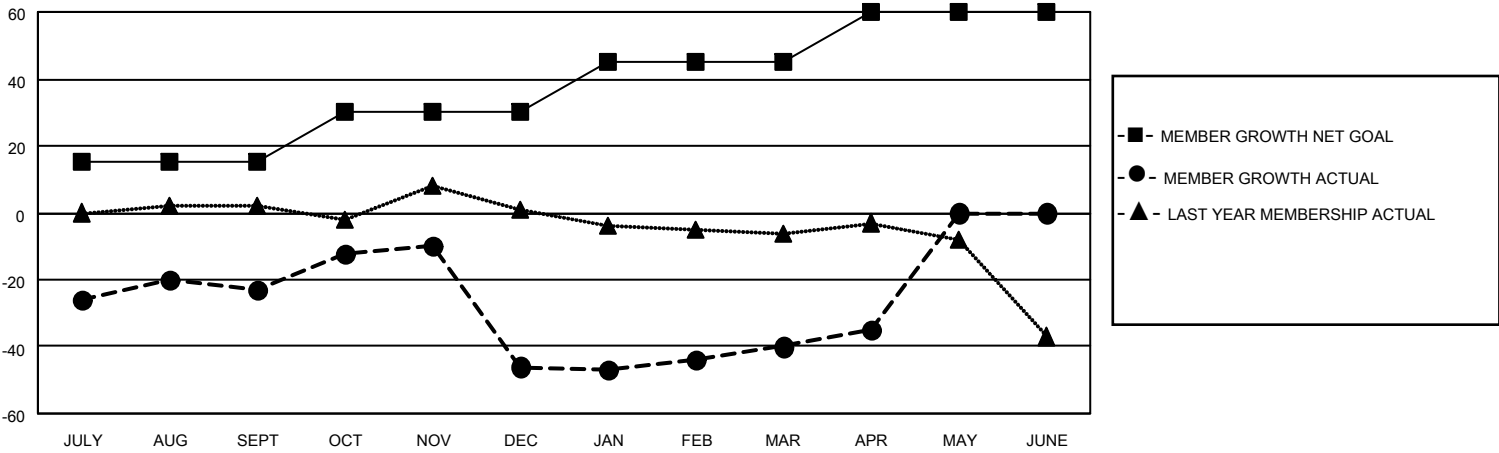
Clubs			
RESULTS FOR 2022-2023			
QUARTER	NEW CLUB GOAL	NEW CLUBS	DROPPED CLUBS
JULY/AUG/SEPT	0	0	0
OCT/NOV/DEC	1	0	1
JAN/FEB/MAR	0	0	2
APR/MAY/JUNE	1	0	0

Members			
RESULTS FOR 2022-2023			
QUARTER	MEMBER GROWTH NET GOAL	MEMBER GROWTH ACTUAL	DROPPED MEMBERS ACTUAL (including transfers)
JULY/AUG/SEPT	15	16	39
OCT/NOV/DEC	15	32	48
JAN/FEB/MAR	15	15	8
APR/MAY/JUNE	15	13	7

**GOALS AND ACTUAL NEW CLUBS CUMULATIVE**



**GOALS AND ACTUAL MEMBERS CUMULATIVE**



**DROPPED CLUBS: 3**

**18 CLUBS OF 42 ADDED 1 OR MORE NEW MEMBERS**

**GENDER DISTRIBUTION**

MALE	611 (68.57%)
FEMALE	280 (31.43%)
NON BINARY	0 (0.00%)
PREFER NOT TO ANSWER	0 (0.00%)

**DROPPED MEMBERS**

[CLICK HERE FOR CUMULATIVE MEMBERSHIP DATA](#)

DECEASED	9
CLUB CANCELLED	23
OTHER	70
<b>TOTAL</b>	<b>102</b>

TOTAL FAMILY UNIT MEMBERS 192

FAMILY MEMBERS PAYING HALF DUES 99